

NetBotz® Rack Access PX

Availability

- Proximity card access: Restrict equipment access to authorized people through proximity card interaction
- User access scheduling: Restrict equipment access to specific times for each configured user
- Alarm beacon: Visual indication of access violation or environmental issue
- Alert Notification: Identify problematic trends before they escalate or export the data log for analysis.
- Event logging: Pinpoint the timing and sequence of events leading up to an incident by using the integrated audit trail.

Manageability

- Centralized management: Allows group administrative capabilities via InfraStruXure® Manager.
- Master key override: Override electronic access with a hard key for power outages and maintenance
- Forced entry alarm: Alarm administrators based on a forced entry into a rack
- One-time access schedule: Configure the rack to be unlocked for a scheduled time period for maintenance
- Browser accessible: View the user interface with a browser. Gives quick access from anywhere on the network without the need to install software.
- Rack mounting: Includes horizontal, vertical, and toolless mount.

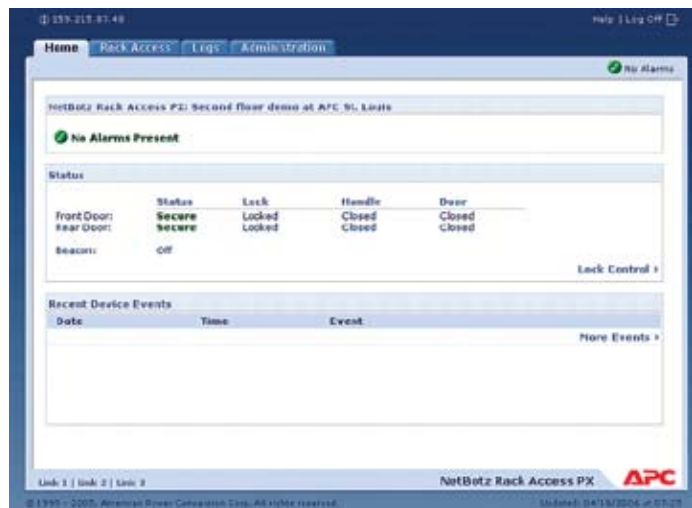
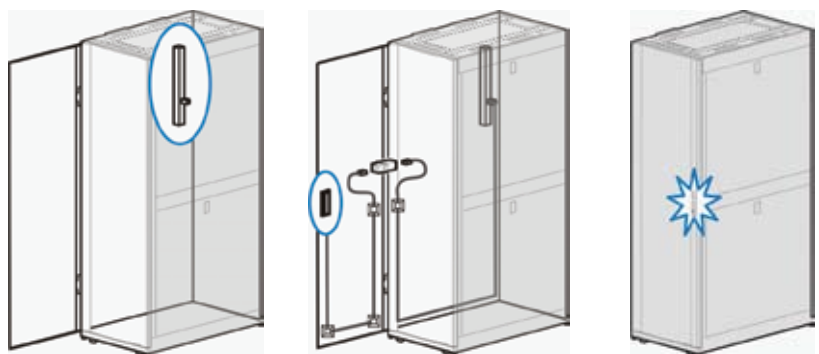
Protection

- Administrative access: Full access and read-only levels available.
- Read-only access: Share access without risking unauthorized configuration changes.
- Password security: User-selectable password protection for Web interface.
- Alert notification: Configure alert destination for access and device alarms.



Rack Access PX is a browser-accessible appliance that allows control and management of access privileges. The Rack Access PX can be mounted in a 0U or 1U configuration and is designed for APC's NetShelter SX enclosures. Access is granted through the use of proximity cards or a Web interface. Administrators can easily configure access control profiles for individual employees, configure scheduled access to equipment for maintenance purposes, and view audit trails. Various alarm notifications are available to indicate a compromised security state such as forced entry and door position.

Network appliances enabling remote and local authentication for your NetShelter® SX enclosures.

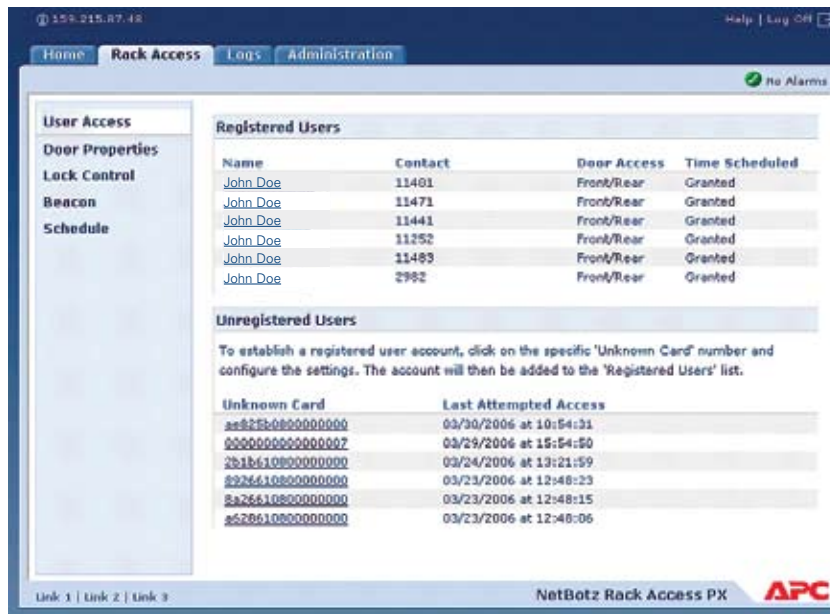


NetBotz Rack Access PX is ideal for:

- racks that contain sensitive equipment and information
- racks in remote or unmanned locations
- recording detailed access logs such as who accesses what and when
- monitoring the lock and door status of racks to ensure that all racks are secured

Technical Specifications

Components	Rack Access Appliance, 2 Proximity Card Reader Handles, 2 RJ45 Style Door switch kits, cables, hardware
Accessibility	Remote Access, Proximity Card, Master Key Override, User Access Scheduling
Rack Mounting	0U or 1U
Enclosure Compatibility	NetShelter® SX
Alert Notification	SNMP, Paging and e-mail
Network Configuration	TCP/IP Configuration Parameters
Management Solutions	InfraStruXure® Manager, HP Open View, What's Up Gold
Appliance Ports	1 RJ-45 Ethernet Port, Serial Port (configuration only), Front Door Lock Port (handle), Front Door Switch (switch), Peripheral Port (optional device), Rear Door Lock Port (handle), Rear Door Switch (switch)
Power	Integrated 110/240 volt power supply (IEC connector)
Proximity Card Capacity	Up to 20 proximity card signatures per appliance
Proximity Card Compatibility	Texas Instruments Proximity Cards



APC's quality system is certified by ISO 9001 standards



For more information call:
Tel: 800 800 4APC - US & Canada
Tel: 401 789 0204 - World wide

APC Corporate
APC North America
132 Fairgrounds Road
West Kingston, RI 02892 USA
Call: 800 800 4APC
Fax: 401 789 3710

APC Europe
APC Ireland
Ballybrit Business Park
Galway, Ireland
Call: +35 391 702000
Fax: +35 391 756909

APC Asia Pacific
APC Australia
Level 13, The Denison
65 Berry Street
North Sydney, NSW2060
Call: +61 2 8923 9373

APC Latin America
5301 Blue Lagoon Dr.
Suite #610
Miami FL 33126 USA
Call: 305 266 5005
Fax: 305 266 9695

Visit: www.apc.com
e-mail: apcinfo@apc.com
Web Support: support.apc.com
PowerFax: 800-347-FAXX

