

## Using the Programmers Console to Configure Your NetBotz Appliance

All NetBotz appliances ship with the *NetBotz Installer CD-ROM*, which includes a Java-based Windows application that is used to configure the network settings on your NetBotz appliance. However, if you do not have access to a Windows system or do not wish to use the NetBotz Installer to configure your appliance you can also perform the network configuration using a serial communications program (such as HyperTerminal) and the DB-9 Male/Female serial cable that is included with your appliance and configure the appliance from the Programmers Console. The Programmers Console is a text-mode configuration interface that runs on the appliance itself.

**Note:** While the examples and instruction in this document pertain to HyperTerminal, the serial communications program that is included with Windows operating systems, most serial communications programs are similar in function and configuration. If you are using a serial communications program other than HyperTerminal be sure to use the settings specified in step 2 on page 2 when configuring your communications settings.

### Before You Begin

Before you begin, be sure to collect the following information. You will need this information to configure the network parameters on your appliance.

- **DHCP and IP Address Information:**
  - Does your network use a DHCP server?
  - If you do not use DHCP, what IP address is assigned for use by your NetBotz appliance?
- **Subnet Mask Information:**
  - Will you use a subnet mask for the appliance LAN interface? (Y/N)
  - If you are using a subnet mask, what is the mask?
- **Gateway Information:**
  - Will you use a default gateway for packet routing?
  - If you use a default gateway, what is the IP address of the gateway?

### Using the Programmers Console

To configure your appliance from the Programmers Console:

1. Plug your DB-9 Male/Female serial cable into an available serial port on your system. Then, connect the other end of the serial cable to your NetBotz appliance.

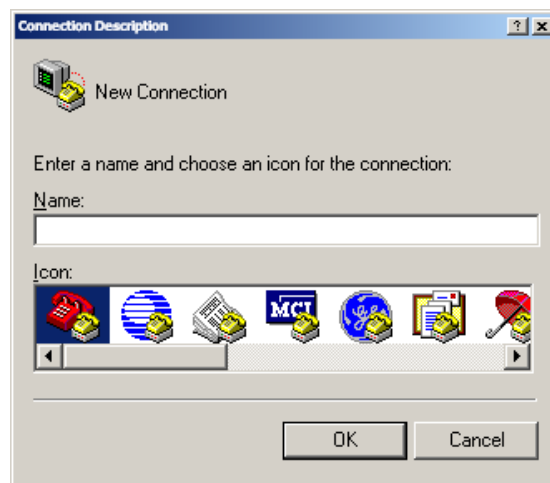
2. Start a serial communications program, such as HyperTerminal, and use it to configure a COM port on your system to communicate with your NetBotz appliance. Instructions on how to do this using HyperTerminal follow.

**Note:** If you are not using HyperTerminal, be sure to use the following serial communications settings for your communications session and then proceed to step 3 on page 3:

- Bits per second: 38400
- Data bits: 8
- Parity: none
- Stop Bits: 1
- Flow Control: Hardware or None

To configure a serial communications session using HyperTerminal:

- a) Start HyperTerminal on your Windows system (click **Start** → **Programs** → **Accessories** → **Communications** → **HyperTerminal**).
- b) The Connection Description window opens (shown below). Type a name for this connection in the **Name** field, select an icon, and then click **OK**.

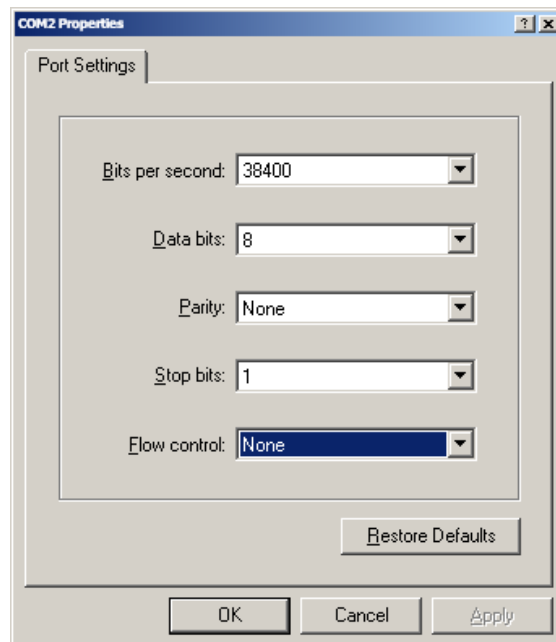


- c) The Connect To window opens (shown below). Select from the **Connect using** dropdown the COM port that is configured for use by the serial port to which you connected the DB-9 Male/Female serial cable and then click **OK**.



d) The COM Properties window opens (shown below). Use the following Port settings for this communications session:

- **Bits per second:** 38400
- **Data bits:** 8
- **Parity:** None
- **Stop Bits:** 1
- **Flow Control:** Hardware or None.



When you have finished specifying the COM Port Properties, click **OK** to start your HyperTerminal serial communications session.

3. Plug your NetBotz appliance power cable into your NetBotz appliance (if it was already plugged in, unplug the power cable and then plug it in again

to power-cycle your NetBotz appliance). The appliance will start up, and information similar to that which is shown in the screen capture below will be displayed in the terminal window.

4. When “To change any of this, press enter within 3 seconds” appears in your terminal window, press **Enter**.

```
bot - HyperTerminal
File Edit View Call Transfer Help

Analog to Digital Converter: VHALF = 0x00000200
Analog to Digital Converter: VMAX = 0x000003FF
Analog to Digital Converter: OK
Camera: OK
Application: OK - Version: A1_2_24_86-20020110P

Running application.
-----
CURRENT CONFIGURATION:
IP address on LAN is 192.168.2.20
LAN interface's subnet mask is 255.255.255.0
IP address of default gateway to other networks is 192.168.2.1
DHCP is disabled
This board's MAC Address is 00:02:D3:00:3D:4E
Product Code:      WallBotz
Revision Code:     REV A03
Manufacture Date:  09/20/2001
Manufacturer Code: TEX
Product Model Number: 400
pSOS 2.5.1 Version
-----
To change any of this, press any key within 3 seconds

(M)odify any of this or (C)ontinue? [M] _

Connected 0:03:48  Auto detect  38400 8-N-1  SCROLL  CAPS  NUM  Capture  Print echo
```

5. After you press **Enter**, “(M)odify any of this or (C)ontinue? [M]” will appear in the terminal window. Type M and then press **Enter** to continue.

**Note:** If this line does not appear, you probably did not press **Enter** quickly enough when you initially power-cycled your appliance. Power-cycle the appliance again and be sure to press **Enter** within three seconds.

6. The following message appears in your terminal window:

“For each of the following questions, you can press <Return> to select the value shown in braces, or you can enter a new value.”

You are presented with a series of prompts that enable you to configure all of the network interface parameters on your NetBotz appliance. You can configure the following values:

- Use DHCP? (Y/N)
- Host IP Address
- Use a subnet mask for the LAN interface? (Y/N)
- Subnet mask for LAN
- Should there be a default gateway for packet routing? (Y/N)

- Gateway IP Address

When presented with each option, type the appropriate value and then press **Enter**.

```

bot - HyperTerminal
File Edit View Call Transfer Help
LAN interface's subnet mask is 255.255.255.0
IP address of default gateway to other networks is 192.168.2.1
DHCP is disabled
This board's MAC Address is 00:02:D3:00:3D:4E
Product Code:      WallBotz
Revision Code:     REV A03
Manufacture Date:  09/20/2001
Manufacturer Code: TEX
Product Model Number: 400
pSOS 2.5.1 Version
-----
To change any of this, press any key within 3 seconds

(M)odify any of this or (C)ontinue? [M]

For each of the following questions, you can press <Return> to select the
value shown in braces, or you can enter a new value.

Use DHCP? [N]
Host IP address? [192.168.2.20]
Use a subnet mask for the LAN interface? [Y]
Subnet mask for LAN? [255.255.255.0]
Should there be a default gateway for packet routing? [Y]
Gateway IP address? [192.168.2.1]

Connected 0:00:32  Auto detect  38400 8-N-1  SCROLL  CAPS  NUM  Capture  Print echo

```

**Note:** You will also be prompted for changes to the appliance manufacturing information. This information is for NetBotz, Inc. use only and cannot be changed without a special unlock code. When prompted regarding making changes to this information, type **N** and press **Enter**.

7. After you have entered all network parameters, “(M)odify any of this or (C)ontinue? [M]” will appear in the terminal window. Type **C** and then press **Enter** to save your parameter settings. The following messages appear in your terminal window: “Dialog done. Updating parameter storage. This may take a while...Done.”
8. The new network parameter settings have now been saved to your appliance. The appliance restarts automatically. You are now finished and can unplug the DB-9 Male/Female serial cable from your appliance and your system.

**Optional:** If you wish, you can connect an Ethernet cable to your NetBotz appliance and connect the Ethernet cable to a 10/100 Ethernet wall jack or hub. Then, power-cycle the appliance one last time and observe the output from the appliance in your terminal window. A series of statements regarding the various services that are started on the appliance are displayed.

When the statements “Starting FSV” and “FSV started” appear in the terminal window the appliance is up and running. Additional output may appear after this statement, depending on your configuration, but if “FSV started” appears your appliance should be functioning normally.